

Annual Report

Hawaii Geographic Information Coordinating Council



2010—2011

The Hawaii Geographic Information Coordinating Council (HIGICC) is a private non-profit organization of professionals and students from the federal, state, county, education, and private sectors of Hawaii's GIS community. Our goal is to provide coordination of GIS activities among a wide range of GIS users in order to avoid duplication of effort, promote data sharing, and maintain data standards throughout the state.



Table of Contents

| | |
|------------------------------------|----|
| Introduction | 3 |
| Board of Directors | 3 |
| President's Report | |
| 2010-2011 Review | 4 |
| 2011-2012 Preview | 5 |
| Committee Reports | |
| Finance | 6 |
| Policy and Compliance | 8 |
| Membership | 9 |
| Education and Outreach | 10 |
| Data Inventory and Assessment | 14 |
| Information Technology (no report) | |
| Contact Information | 15 |

HIGICC
P.O. Box 1174
Honolulu, Hawaii 96807-1174
<http://higicc.camp8.org>
Email: higicc@higicc.org

Introduction

The Hawaii Geographic Information Coordinating Council (HIGICC) is a private non-profit 501(c)(3) organization consisting of members of Hawaii's geospatial community. Our goal is to provide coordination of geospatial activities among a wide range of users in order to avoid duplication of effort, promote data sharing, and maintain data standards throughout the state. HIGICC is a member of the National States Geographic Information Council (NSGIC), "an organization committed to efficient and effective government through the prudent adoption of geospatial information technologies."

HIGICC strives to bring together and continue to build the geographic community into a cohesive, recognized coordinating body that facilitates the use, development, sharing, and management of geographic data and communicates the value of geographic information to citizens and decision-makers. In the State of Hawaii, GIS is recognized and effectively used as an invaluable tool by the government, business and the citizens for understanding and managing our aina (environment). The Hawaii GICC is a shared mechanism for the diverse community to identify, explore, and solve problems with geospatial information.

Board of Directors

According Article V, Section 2 of the Bylaws: "The Board shall total eleven (11) members representing the broad composition of the membership of the HIGICC. The Board membership shall be composed of two (2) members from each of the following four categories: a) U.S. Federal government agencies, b) State of Hawaii government agencies, c) City and County government agencies within the State of Hawaii, and d) other organizations and individuals. The remaining three (3) members shall be at-large representatives.

| | | |
|---------------------|----------|-----------------------------------|
| Arthur Buto | State | <i>President</i> |
| Royce Jones | At Large | <i>Vice President</i> |
| Joan Delos Santos | State | <i>Treasurer</i> |
| Jamie Carter | Federal | <i>Secretary</i> |
| Derek Masaki | Federal | |
| Garrett Johnson | County | |
| Ken Schmidt | County | |
| Alexa Jacroux Biggs | Other | |
| Mark Harrington | Other | |
| Carol Kennedy | At Large | |
| Isla Young | At Large | |
| Ron Salz | | <i>Ex officio, Past President</i> |
| Adam Stein | | <i>Ex officio, NOAA Liaison</i> |
| Henry Wolter | | <i>Ex officio, USGS Liaison</i> |

President's Report

2010-2011 Review

It was a relatively quiet year, but we reached several important milestones. The yearlong project that resulted from the FGDC Cooperative Agreement Program (CAP) award that we received last year started off the fiscal year with the Imagery Workshop at last year's Annual Meeting. The project came to a successful close when we submitted our final report and the associated Business Plan in May 2011. The "*Business Plan for Imagery Acquisition, Metadata, and GIS Data Portal*" (Business Plan) outlines several options in each category for HIGICC to pursue as we move forward toward each of these objectives.

We also returned to hosting a GIS Day activity after a several year hiatus. The 2010 event was hosted at Bishop Museum, which generously allowed us the use of their facilities and some of their support staff. As it has in the past, GIS Day offered a wonderful opportunity for HIGICC members and organizations to show their support for and lend their resources to this fun and educational activity for our schoolchildren.

Our scholarship program was reworked and expanded and now comprises two awards of \$1,000 each, one for an undergraduate and one for a graduate level student. The high quality of the applications this year was an encouraging sign to the Scholarship Working Group of the future of geospatial studies in Hawaii's schools.

There were several training opportunities this year for members, including a GIS workshop from the Census Bureau at several venues around the state. Perhaps the most important for HIGICC (as a follow-up to the Business Plan) was a series of metadata classes jointly sponsored by HIGICC and NOAA. A capacity crowd filled the NOAA training facility for an "*Introduction to Geospatial Metadata*" class. Not only was the classroom filled, but NOAA reached its capacity of 20 online attendees as well. Following the introductory course a handful of students were trained later in the week in a 2-1/2 day "*Metadata Train the Trainer*" session. The result is that there are ten Hawaii-based trainers who will carry on the metadata training around the state (included was one trainer from each of the neighbor island counties). Based on the response to the introductory class, we believe that this training resource is a valuable one for HIGICC and for the state.

Another highlight not attributable to HIGICC, but involving our partners and directly related to the Business Plan, is the long-awaited delivery of the 1-meter, 8-band multi-spectral WorldView-2 statewide imagery collection from USDA-NRCS, USGS, and the State of Hawaii.

It was especially encouraging to see our membership numbers increase this year, even in the absence of a major conference or event. We hope that there is value in your HIGICC membership, and we'll be asking for your feedback throughout the coming year.

2010 HIGICC Annual Report

2011-2012 Preview

The coming year promises to be just as eventful as this year has been. GIS Day will continue this year, though the day may change to allow for the State DOE's abbreviated school day on Wednesdays. This will enable more schools to participate and will provide us time to schedule more activities.

Then in March 2012, coinciding with the 500th birthday of Mercator, HIGICC and the State of Hawaii are hosting a GIS Conference at the Hawaii Convention Center. The conference is tentatively themed, "*Geospatial: It's Everywhere,*" and will feature professionals from multiple disciplines highlighting their use of GIS and geospatial technologies in their fields.

The newly minted Metadata Trainers will be scheduling training sessions throughout the year, so please check the HIGICC website for the latest information.

We're hopeful that the activities will continue to engage not only HIGICC members, but also will be of interest to the community at large. With your active participation we can be a more visible presence and advocate for GIS and geospatial issues in Hawaii.

Finance Committee



Makes budget recommendations, monitors the annual budget and identifies new and existing income sources and strategies to support HIGICC objectives. The Grants and Scholarships Working Groups are under the leadership of the Finance Committee.

Budget

We stayed primarily within budget, with exception of the Metadata Training workshops (\$3,771 unbudgeted) and GIS Day (\$1,056 vs. \$500 budgeted). These budget exceptions were approved by the Board, because they were key events strongly mission-driven. In addition, net costs for the Annual Meeting may be higher than expected because of a relatively high fixed cost and lower than hoped for attendance.

We fell short of our donations goal – we collected \$600 versus the \$3,500 budgeted. We need to bring more attention to these opportunities to support our scholarship fund and GIS Day activities in the next fiscal year. *See financials on following pages.*

The 2012 Proposed Budget includes some adjustments for higher recurring costs (D&O Insurance, NSGIC dues, Contact Management hosting (Wild Apricot). Most notable however, are the budgeted amounts for the 2012 GIS Conference in March, “Geospatial: It’s Everywhere.” The \$110,000 amount is based on the actual costs for the 2006 PacGeo Conference which was a similar size and had similar facility rental fees. *See 2012 Proposed Budget on following pages.*

Membership

Membership counts increased significantly in all categories. Once membership renewals for next year are counted, it is hoped that the revenues for this year will exceed the budget. *See the Membership Committee report for more information.*

Grants

The final report for the USGS **Grant Number 08WRGR0010**, “*Documentation of Hawaiian Place Names for the National Map*” was submitted. However, final deliverables from the primary contractor are still pending. Additional website development is expected to continue that will expand on the audio, video and cultural histories currently available for parts of Ka-hoolawe.

The final report for the 2010 FGDC Cooperative Agreement Program (CAP) Category 4 **Award Number G10AC00168**, “*HIGICC Business Plan for Imagery, Metadata, and GIS Data Portal*” was submitted and accepted. The complete plan, including the original application is

2010 HIGICC Annual Report

posted on the HIGICC website (<http://higicc.camp8.org/2010CAP>). In addition, HIGICC's interim and final reports can be found on the FGDC website along with other states' 2010 CAP reports (<http://www.fgdc.gov/grants/2010CAP/2010CAPlist>). See the *Data Inventory and Assessment Committee report* for more information.

The net grant income for fiscal year 2011 is approximately \$3,600 after subtracting out the outstanding payment due on Names grant.

With the completion of the FGDC CAP Grant, and the work outlined in the resulting Business Plan, it is recommended that the Board consider applying for a 2012 CAP award when the categories are announced in September or October to further mission and increase revenues.

Mark Lierman Memorial Scholarships

This year HIGICC offered two \$1,000 scholarships — one for an undergraduate student and one for a graduate /doctorate student. The scholarships are intended to help offset costs for the 2011-2012 academic year, so applicants are expected to be enrolled in an academic program for that time period.

HIGICC received eight applications for the two available scholarships. While this may not seem like a large number of applicants, a significant effort is expected from the applicants. In addition to completing the application form itself, they must provide representative samples of their work, a written essay, as well as recommendations.

Two applicants this year had no connection to Hawaii. We can only assume they discovered the opportunity by searching the web. As our intent as the **HIGICC** is to aid students who will promote GIS in the state of Hawaii, the committee recommends that the website state that preference will be given to students from Hawaii or students attending school in Hawaii.

All applications were reviewed and evaluated according to a matrix developed by the previous scholarship committee. The quality of applications we received was quite daunting. The depth of interest and experience demonstrated by the candidates reveals a hopeful future for GIS in Hawaii.

Congratulations to the 2011 winners!

Elena Abe, graduate of *King Kekaulike High School* and currently attending *Oregon State University* pursuing a degree in Public Health with a minor in GIS; and

Kosta Stamoulis, a graduate student in Geography at the *University of Hawaii at Manoa*.

~~ Submitted by *Joan Delos Santos, Treasurer*
Carol Kennedy and Isla Young, Scholarship WG

Policy and Compliance Committee



Reviews the bylaws and Board policies that impact the operations and legal obligations of the Board.

The HIGICC Policy and Compliance Committee had great intentions of reviewing the Bylaws and the current year's Legislation for non-profit organizations. As of the date of this draft only small steps have been taken to accomplish these tasks. The members of the committee attended a one-day short course offered by the **Hawaii Association of Nonprofit Organizations (HANO)** titled "*Nonprofit Advocacy 101*". The course focused on key areas that will help non-profit leaders achieve the full potential of advocacy work for their organizations, clients and communities. In addition to new insights and learning, the sessions were designed to help participants form networks with peers for the ongoing exchange of information and mutual support.

The Policy and Compliance Committee will continue to move forward next year by engaging in a full review of the Bylaws of the organization and increase our involvement as an organization in engaging the State Government leaders to become more aware and involved in our non-profit organization.

Other issues that might necessitate a review of the Bylaws is the proposal to restructure the Organizational Membership dues to a tiered structure that would incorporate various levels of support and benefits. Potential changes in the participation level of federal council members may also require a change in the language of the Bylaws to mitigate liability and perceived conflicts of interest in governance of the Council.

~~ Submitted by Mark Harrington, Chair

Membership Committee

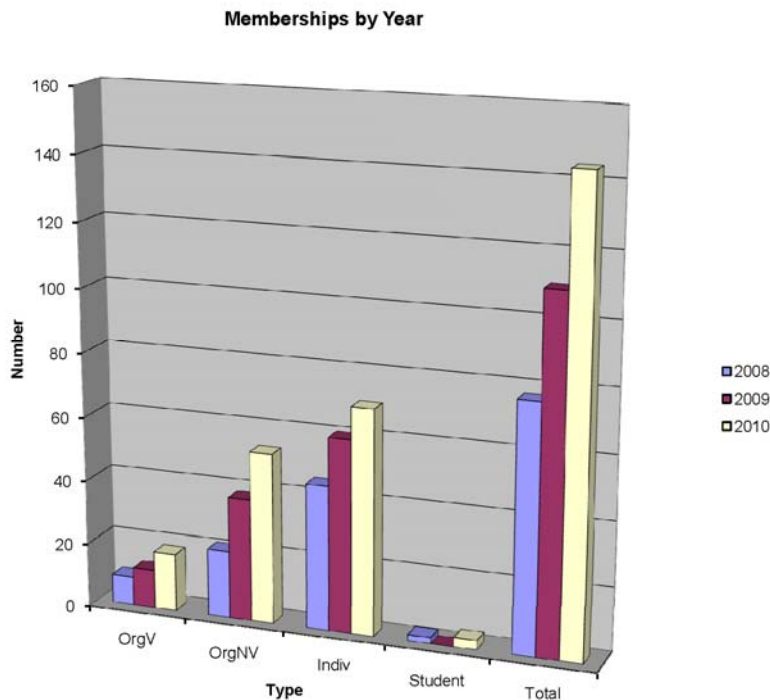


Recommends policies, procedures, initiatives and strategies for retaining and enhancing the current membership of HIGICC.

Membership for the 2010 to 2011 period increased 31% from the 2009 to 2010 period to 144 members, 88 of whom are voting members. This includes 71 individual members, 70 organizational members, and 3 student members. 27% of the membership represents federal agencies, 16% represent state agencies, 14% represent the counties, and 43% represent non-governmental organizations.

A study two years ago by the Membership Committee resulted in a recommendation to change the structure of the Organizational Member dues to one that is tiered with significantly higher levels that will serve to increase the revenue from member dues and also offer more benefits to organizational members, ranging from visibility on the HIGICC website to increased visibility at conferences, luncheons, and other HIGICC activities. The Board is currently considering this proposal and its implications on the Bylaws and operations of the Council.

~~ Submitted by Jamie Carter, Secretary



Education and Outreach Committee



Promotes geospatial education through outreach, creative programs and online resources, builds awareness of and support for geospatial technology and resources in the community at large, and identifies training needs and opportunities.

- *GIS Day/Event Planning*
- *Curriculum Development - K-12 Support for Educators and Students*
- *Special Events and Conferences*
- *Luncheon Series*
- *HIGICC Newsletter*
- *Outreach*

GIS Day

Wednesday, November 17, 2010 was International GIS Day celebrated around the world. HIGICC celebrated in two ways. We worked with Maui Economic Development Board's (MEDB) Women in Technology group to provide speakers who gave 30 minute webcasts throughout the day to K-12 classrooms across Hawaii. We also had a large number of volunteers out at Bishop Museum where we had several stations for students to visit. In addition to MEDB and Bishop Museum, a number of other local agencies and organizations provided logistical and resource support for the event — ESRI, NOAA, Statewide GIS Program (DBEDT), DLNR, and USGS.

A great time was had by all – students and volunteers. In the afternoon, young GIS professionals told how they learned GIS in college and now use it in their work. And we finished with three GIS professionals sharing how GIS saved the day in flood and fire prevention and preserving equal representation during elections *See photos on the following pages.*

GIS Certificate and Workforce Development

Throughout the year HIGICC worked with the University of Hawaii system in Hilo and on Maui to develop coursework leading to a GIS certificate. In addition, with a federal grant, HIGICC again partnered with the University to develop a workforce development program to incorporate geospatial studies as students prepare for their careers.

Speaker Luncheons and Networking Events

This year we hosted a speaker luncheon which featured our Mark Lierman Scholarship awardee, Christopher Hamilton. Chris' presentation summarized some of his recent work analyzing similarities between geologic processes on Mars and the Earth, "*Explosive Lava-Water Interactions on Earth and Mars.*"

2010 GIS Day at Bishop Museum



Clockwise from top left: Check in for volunteers; waiting for the activity to begin; Henry and Irene (USGS) preparing for the day in the Atherton Halau; the GIS station under the canoe shed gave students hands-on practice using desktop and internet mapping; Christine and Rob (NOAA) showed students how GIS is used to

help manage marine resources; **Center:** "Science on a Sphere" in the Planetarium rotunda used a 3D globe to illustrate various GIS layers for disasters and plate tectonics.

2010 GIS Day at Bishop Museum



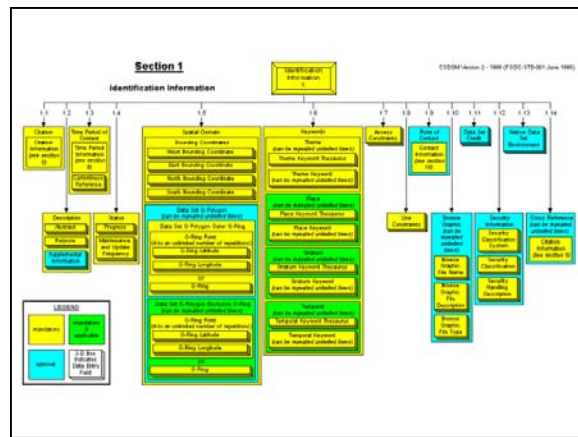
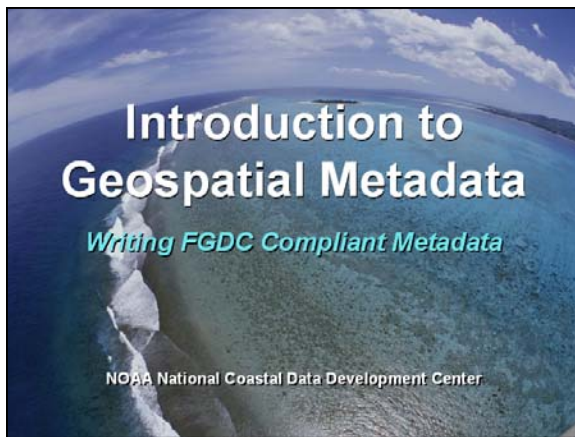
Clockwise from left: Waiting for the GPS activity in front of the planetarium dome - the GPS station gave students hands-on practice using handheld GPS units to find locations in the outdoors; getting instructions from Derek about the geocaching activity taking place on the Great Lawn; GIS Day sign waits at the airport; volunteers enjoying lunch provided by HIGICC; Christine and Rob from NOAA demonstrate their interactive “clicker” activity by conducting polls of the audience.



Later in the year, HIGICC provided a social settings for members to gather — an aloha reception was held to honor HIGICC member and former President, Ron Salz as he prepared to leave Hawaii for a new position with the Fish and Wildlife Service in Virginia; a second gathering was held at PF Chang’s as an opportunity to catch up with old friends and meet new ones.

Metadata Training

In May, HIGICC and NOAA jointly sponsored several trainers from the mainland to come to Honolulu to provide geospatial metadata training. The “*Introduction to Geospatial Metadata*” class was well attended with 40 attendees filling the NOAA training room, 20 more filling the Webex seats. The trainers, Phil Herndon, Kathy Martinolich, and Jaci Mize, also conducted a second class later in the week, “*Metadata Train the Trainer*” at which ten students learned techniques to prepare them to provide metadata training classes on their own. These students — Ron Cannarella, Alexa Jacroux Biggs, Malie Beach-Smith, John Chapman [Kauai], Arthur Buto, Karen Thomas, Rich Nezelek [Maui], Lisa Canale [Hawaii], Christine Feinholz, and Ronnie Torres — have made a commitment to conduct metadata training classes in the next two years. Representatives from the three neighbor island counties are included in the list, as noted above, to facilitate training outside of Oahu.



~~ Submitted by Royce Jones, Vice President

Data Inventory and Assessment Committee



Facilitates data acquisition and development of data standards by taking a leadership role in coordinating data acquisition efforts, establishing and promoting data standards, and facilitating data distribution.

FGDC Cooperative Agreement Program (CAP), Category 4 *“Business Plan for Imager Acquisition, Metadata, and GIS Data Portal”*

- June 2010 -- Imagery Workshop held with key stakeholders from across the state and from the federal, state, county, and private sectors. CAP Grant funded travel of many outer Island participants, increasing valuable user input from across the state. Included in the workshop were discussions about Data Distribution Portal options and Metadata Standards.
- August 2010 -- Board reviewed and accepted final report of the consultant.
- August 2010 -- National NRCS staff presented on imagery updates for Pacific Basin to interested HIGICC board and local participants.
- December 2010 -- HIGICC Board viewed data portal demonstrations from VoyagerGIS and from Keet Consulting Services (KCS), highlighting different options for portal implementation.
- May 2011 -- Submitted final report to the FGDC; reports were subsequently accepted by the FGDC completing the requirements of the CAP.



The reports are available on the FGDC website:
<http://www.fgdc.gov/grants/2010CAP/2010CAPlist>

And on the HIGICC website:
<http://higicc.camp8.org/2010CAP>

National Enhanced Elevation Assessment (NEEA)

Assisted USGS Liaison Henry Wolter on the “Enhanced Elevation” survey. This project will help the state of Hawaii in getting future LiDAR elevation coverage of the state funded by the USGS.

Contact Information

Mailing address: HIGICC
P.O. Box 1174
Honolulu, Hawaii 96807-1174

Email address: higicc@higicc.org [general correspondence]
higicc_board@higicc.org [Board members]

Website: <http://higicc.camp8.org>