

# HIGICC Newsletter - May 2022



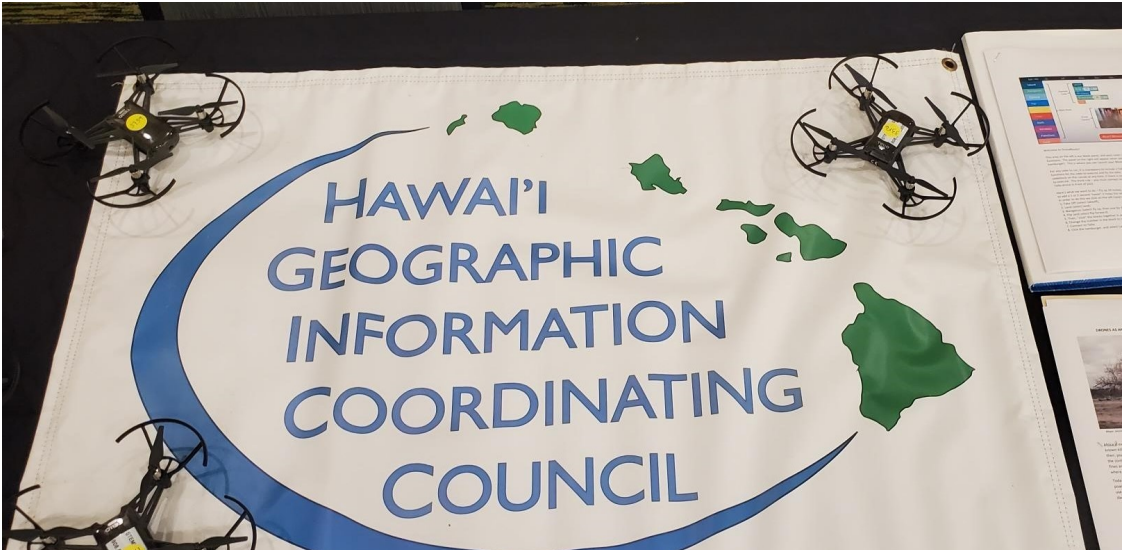
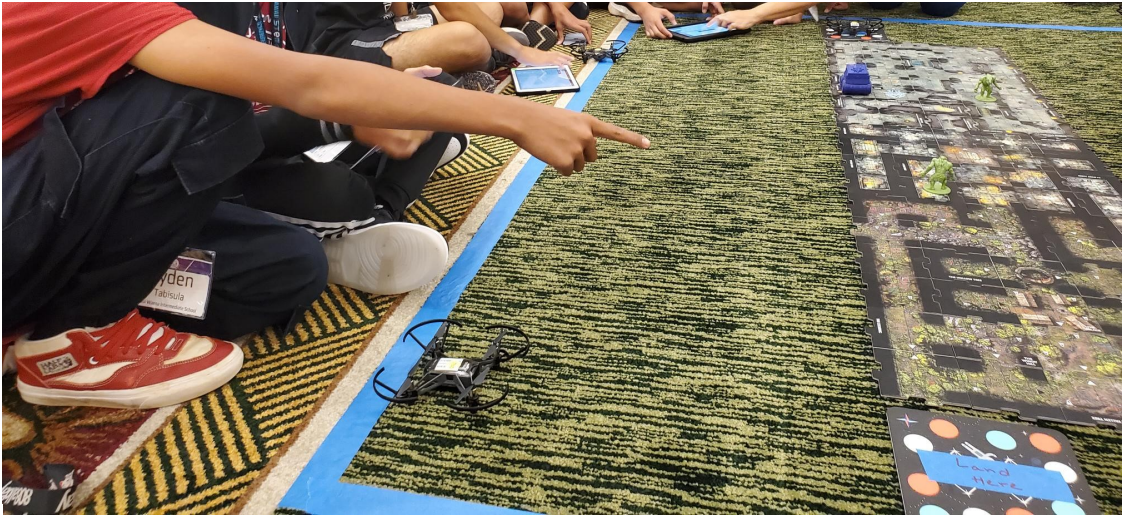
## HIGICC Participates in STEM Conference

*Christine Chaplin, Gretchen Chiques, Sarah Rosenthal, HIGICC*

On April 29th, HIGICC directors were excited to participate in the 13th Annual STEM Conference by offering an Unmanned Aerial Vehicle (UAV) course to high school students from across the state. The course covered what UAVs are used for, how they fly, how to code specific flight paths, and FAA rules and safety. After the presentation, the students participated in two activities where they used their new skills, an iPad, and the DroneBlocks application to code Tello drones to fly in a specific flight path and swarm; and a third exercise in which they used the Tello application to free-fly the drones around obstacles. The course was a great success, and as always, an invitation to present GIS-related topics at the Hawaii STEM Conference is one of the highlights of our year.









---

## [2022 HIGICC Mark Lierman Memorial Scholarship](#)

*Craig Clouet, HIGICC*



### 2022 HIGICC Mark Lierman Memorial Scholarship

Are you a student using geospatial technologies to further your studies? The HIGICC is pleased to announce that we are now accepting applications for the 2022 Mark Lierman Memorial Scholarship. This \$1,000 scholarship is awarded annually to a current college student who has demonstrated an appreciation for and understanding of geospatial data and GIS. The applicant must be enrolled at an accredited college or university and either be attending in Hawaii or have graduated from a high school in Hawaii.

The scholarship application deadline is June 10, 2022. Visit the HIGICC website at [higicc.org/awards](http://higicc.org/awards) for more information!





## STEMworks Internship

# STEMworks Innovation Internship Summer 2022

**APPLY:** APPLICATIONS DUE - FRIDAY, MAY 13TH, 2022

**START:** JUNE 13TH, 2022 (ORIENTATION ON JUNE 10TH)

**END:** JULY 22ND, 2022 (SHOWCASE ON JULY 27TH)

**STIPEND:** \$1,500 AT THE END OF THE 6-WEEK PROGRAM

- The Avocado Group (Creative Media, Photography, Web Design)
- Privateer Space (CAD, Engineering)
- DLNR State Historic Preservation (GIS, Data Analysis)
- Hawaii Space Flight Laboratory (CAD, Creative Media, Engineering, Computer Science)
- Kamanu Composites - Onsite Oahu (CAD, Engineering)
- Dudek (GIS, Mapping Technologies)
- VisSidus Technologies, Inc. (Computer Science, AI, Programming)
- Wastewater Alternatives & Innovation (Creative Media, Water Sampling, Water Quality)
- Last Wave Co. (Creative Media, Social Media Marketing)
- Malama Maunaloa (Creative Media)
- Blue Ocean Barns - Onsite Kailua-Kona (Creative Media, Laboratory Work)
- UH Institute for Astronomy (Astronomy, Computer Science)
- Edge-3D, LLC (Biological Sciences and Technologies)
- Meli Wraps (Creative Media, Social Media Marketing, Web Design)
- Auwahi Wind Energy, LLC - Onsite Maui (GIS, Engineering, Renewable Energy)
- UH Maui College (Material Sciences, Chemistry, Laboratory Data Collection)
- qubedup (CAD, Creative Media, Videogame Design, Computer Science)
- Maui Mind Academy (Creative Media, GIS)
- Hensel Phelps (Engineering)
- Hale Makua - Onsite Maui (Health Care)
- *More to be announced!*

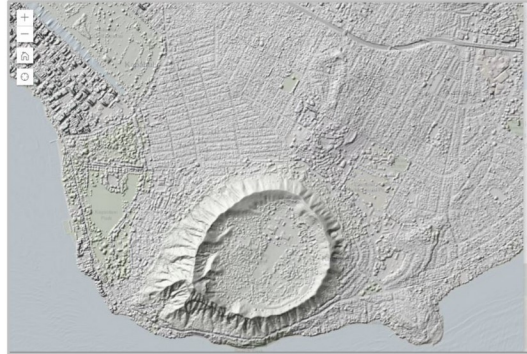
A PROGRAM OF THE MAUI ECONOMIC  
DEVELOPMENT BOARD

[WWW.STEMWORKSHAWAII.ORG/INTERNSHIPS](http://WWW.STEMWORKSHAWAII.ORG/INTERNSHIPS)

## HIGICC Upcoming Events

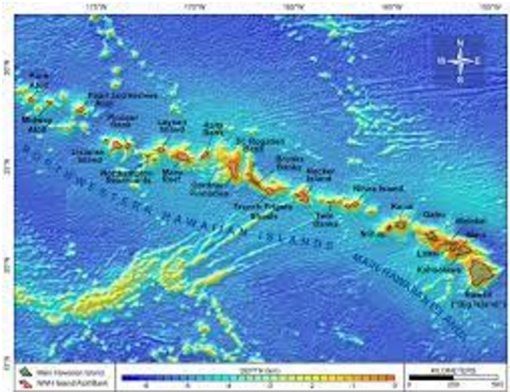
*Craia Clouet. Joan Delos Santos. HIGICC*

## UAV Workshop - June 17, 2022 - 1:30 pm - 4:00 pm



Save the Date! HIGICC will be hosting a workshop on UAVs / Drones on Friday, June 17, from 1:30 pm to 4 pm at the Leiopapa A Kamehameha (State Office Tower) Building, 235 S. Beretania St., Room 204. Attendees will need to register and will be required to sign in with the security guard in the lobby (bring identification). Agenda and registration details coming soon!

## Geospatial Expo - August 2022



HIGICC will be hosting an all-day, in-person geospatial expo in early August,

location TBD. We will be sending out a call for presenters soon!

---

## Job Openings

### **Kamehameha Schools**

Kamehameha Schools is looking for a GIS professional to serve in our Land Information Management and Services department as a Land Business Analyst in our Geospatial Services discipline. This position would provide GIS support (in terms of research, analysis, database management, map and tool creation, as well as the application of sUAS technology to support Kamehameha Schools' operational oversight of more than 360K acres of land.

If you're interested, please review the job description and apply here: [https://ksbe.wd1.myworkdayjobs.com/External/job/Kawaiahao-Plaza/Land-Information-Business-Analyst\\_JR-01783](https://ksbe.wd1.myworkdayjobs.com/External/job/Kawaiahao-Plaza/Land-Information-Business-Analyst_JR-01783)

### **RCUH - Pacific Disaster Center**

RCUH - Job ID#222369

Pacific Disaster Center - Kihei, Maui

GIS Analyst. Full time non-civil service position.

Performs geospatial data analysis, processing, and quality control including standardization, metadata creation, and maintenance. Contributes to the development, implementation, and maintenance of web-based map services including layer configuration and deployment in Pacific Disaster Center (PDC) applications and products to include versioned source files and managing services via a web-based server.

Please apply directly on the RCUH website to be considered for the position. **Closing Date May 23,2022**

INQUIRIES: Scott Okada 891-0525 (Maui).

[https://hcmweb521.rcuh.com/psp/hcmprd\\_exapp/EMPLOYEE/HRMS/c/HRS\\_HRAM.HRS\\_APP\\_SCHJOB.GBL?FOCUS=Applicant](https://hcmweb521.rcuh.com/psp/hcmprd_exapp/EMPLOYEE/HRMS/c/HRS_HRAM.HRS_APP_SCHJOB.GBL?FOCUS=Applicant)

---

Esri User Conference Networking Event

PAU HANA  
Esri UC 2022

HIGICC INVITES YOU TO THE  
SPECIAL NETWORKING EVENT AT  
ESRI UC IN SAN DIEGO

LOCATION: TBD (WE WILL SEND AN EMAIL IN THE  
UPCOMING WEEK WITH DETAILS)

Tuesday July 12 5:30-7:30 PM

Got questions? email: [higicc@higicc.org](mailto:higicc@higicc.org)

Mahalo to our Sponsors!



**DUDEK**