

# HIGICC Newsletter - August 2022



---

## 2022 HIGICC Mark Lierman Memorial Scholarship

*Craig Clouet, HIGICC*

**HIGICC Mark Lierman Memorial  
Award Scholarship, 2022**

The Mark Lierman Memorial Scholarship for 2022 has been awarded to Kailey Pascoe, a Geography PhD student in the Arizona State University - Hawaii Program. A Native Hawaiian resident of Hawaii, Kailey plans to use science and innovative technologies to understand how coral reefs respond to climate change. Kailey's application was chosen from among several worthy applicants, and HIGICC would like to thank all those who applied and encourage those who were not chosen to try again next year. Congratulations Kailey!

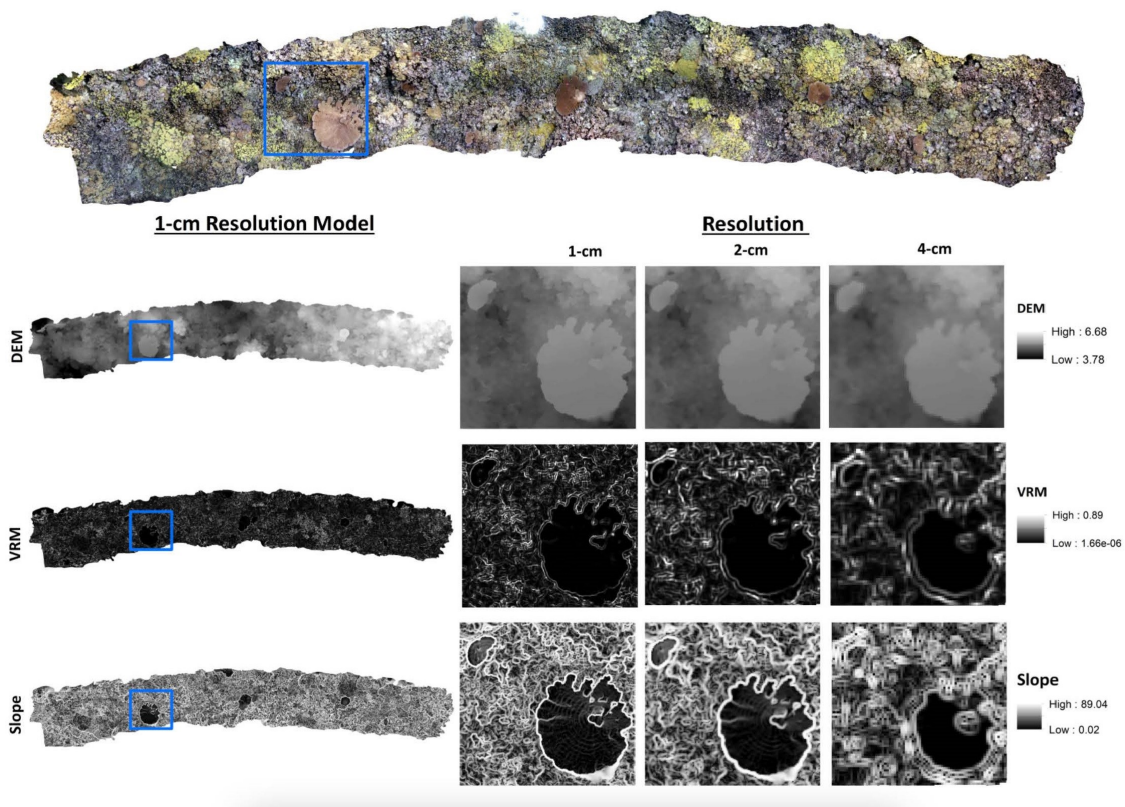


Image Description: Coral-reef orthomosaic, digital elevation model, vector ruggedness measurements and slope raster. This project looked into different resolutions and their associations between coral species. This was a huge learning experience because I had to extract slope and vector ruggedness measurements (VRM) from 1, 2, and 4 cm resolution Digital Elevation Models (DEMs). I produced this figure to showcase what exactly that looks like between the different resolutions for the *Acropora* table corals displayed within the bounding box.

---

## [HIGICC Holds Geospatial Expo](#)

*Christine Chanlin HIGICC*

The Honolulu Geospatial Expo was held on the 5<sup>th</sup> of August at the Hawaii State Capitol Auditorium. There were over 100 attendees, and 12 wonderful presentations that ranged from honoring two of HIGICC's founding members, Ken Schmidt and Ron Salz, to spatial data tools, workflows, to data capture projects. Mahalo to Frontier Precision and the Banyan Café for providing coffee and baked treats. The winner of the web map application was the State of Hawaii Coastal Zone Management Team: Lisa Webster, Sarah Chang, Keelan Barcina, and Justine Nihipali. You can find their beautiful Esri Hub site here: <https://ormp.hawaii.gov/>



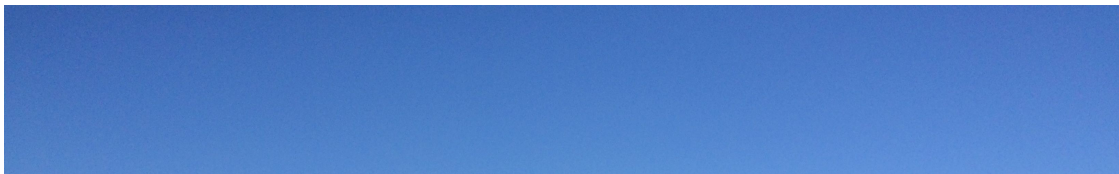
---

## [HIGICC Founding Members Retire](#)

*Joan Delos Santos, HIGICC*

Two respected members of Hawaii's GIS community retired recently, and both were honored at the recent Honolulu Geospatial Expo.

**Ron Salz**





Ron Salz retired as chief cartographer for the National Wildlife Refuge System at the end of 2021. This completed over 34 years supporting federal geospatial initiatives. He started his career in 1987 with the Bureau of Land Management (BLM) after completing undergraduate degrees at U.C. Berkeley. While employed, he also earned masters degrees from Cal Poly Pomona and the University of Oregon.

In 2011 he moved to USFWS Headquarters in DC as the first GIS Coordinator for the Refuge system.

In his career Ron worked for BLM, the US Fish and Wildlife Service, the United States Marine Corps, the City of Palm Springs and for the US Geological Survey. In his most recent job he worked with realty cartographers across the nation to develop and publish the USFWS cadastral GIS layers and applications for over 560 national wildlife refuges. He was also deputy member of the US Board on Geographic Names (BGN) and representative to the Federal Lands Working Group. In 2021 Ron was acting deputy director for the USGS National Geospatial Program.

Ron was a founding member and past president of HIGICC and served as a Board Director for several years. Ron was one of the first recipients of the HIGICC President's award, winning in 2003 for his significant contributions to Hawaii's GIS community, including leading a statewide geospatial conversation through an FGDC grant. Ron contributed to other local professional organizations as well, including the American Planning Association (APA) and the Data Management Association (DAMA). He also co-founded the Graduate Planning Students Association at Cal Poly Pomona.

Planning Students Association at Cal Poly, Pomona.

Ron grew up in Altadena, California. He has lived and worked in Hawaii, California, Oregon and Virginia, and recently moved back from Virginia to Kailua, Hawaii.

## **Ken Schmidt**



Ken Schmidt retired in June after nearly 32 years leading the City and County of Honolulu's implementation of GIS. Ken began his career with the City in 1990 as a Planner VI with the Department of General Planning, advancing to a GIS Analyst VII, eventually becoming the GIS Administrator in the Department of Planning and Permitting. He established and developed the City's GIS Program into the nationally recognized Honolulu Land Information System (HOLIS), which provides vital data for City programs and useful information for the public. Ken managed the implementation and integration of the land information system with the City's permitting system to enable effective management, tracking, issuance, and inspection of land development and building permits.

Through the years, Ken represented the City at national and international GIS forums and helped to organize local GIS Day events and officiate at geography bees to advocate GIS awareness and education in our community and beyond.

Ken is a founding member and past president of HIGICC and was awarded the President's Award in 2009 for significant contributions to the geospatial community. He is a recipient of several industry recognitions, such as Esri's

Special Achievement in GIS award in 1998 and 2012, and Esri's GIS Hero in 2011. The City selected him as Employee of the Year in both 1991 and 1996, and City Manager of the Year 2010.



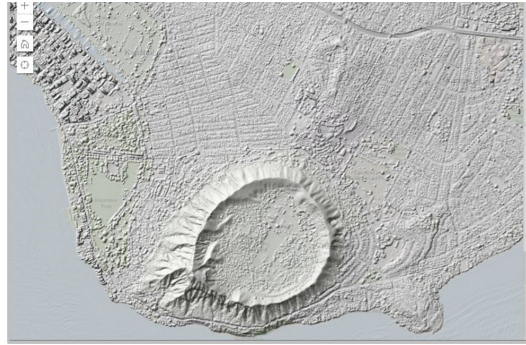
Congratulations Ken and Ron, on your many accomplishments! Thank you for all you've done for HIGICC and for the GIS community in Hawaii – enjoy your well-deserved retirement!

---

## [UAS Workshop Held](#)

***Craig Clouet, Dudek***

HIGICC hosted a UAS Workshop on June 17 in the State Office Tower. Presenters included Katie Taladay of MEDB STEMWorks, who presented on UAS in Education and Brett Etheridge of Stantec who gave a presentation on FAA Part 107 Rules. This was followed by a presentation by Craig Clouet and his colleagues at Dudek who showed how different sensors on UAS platforms can collect a variety of data, including lidar, multispectral and thermal data. Finally, Sean Muldoon and Brennan O'Neil of Frontier Precision talked about DOD and other federal restrictions and Blue UAS Solutions. There was a great deal of interest in all of the topics and it turned out to be a great workshop. The workshop was followed by another fun Pau Hana at Square Barrels hosted by Dudek, Frontier Precision and Stantec.



---

## [2022 Esri User Conference Highlights](#)

*Gretchen Chiques, Esri*

The 2022 Esri User Conference returned to the San Diego Convention Center in July, with the theme of “Mapping a Common Ground.” The conference opened with the same energy as in previous years when the conference was hosted in person, with more than 14,000 GIS professionals in attendance.

The plenary focused on taking a collaborative, geographic approach to tackle climate change. It included speakers from the White House, California Natural Resources Agency, National Geographic, and FEMA, among many others.

New products and capabilities include:

**StoryMaps.com** - The new personal storytelling. This new way to communicate geographic knowledge more broadly is now available for personal storytelling and social sharing. Go to the website, download the app, and share your story with the world.

**ArcGIS IPS** - Brings GPS indoors by enabling organizations to add indoor location services across their facilities and campuses. The indoor wayfinding is made possible by installing Bluetooth beacons inside buildings that send out radio signals picked up by devices.

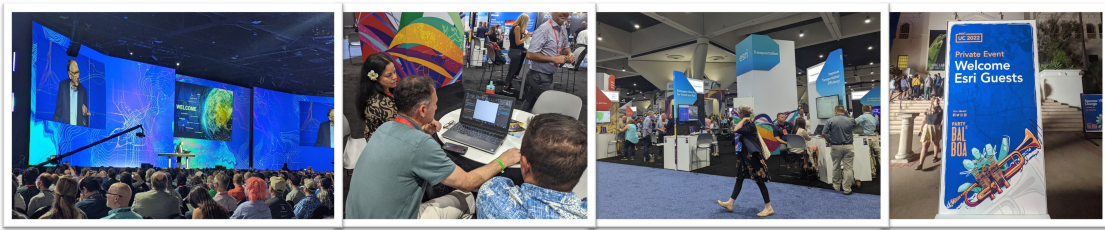
**ArcGIS Maps SDK** for game engines such as Unity and Unreal Engine empowers developers to create simulation-style applications using GIS for a fully immersive experience.

**ArcGIS Knowledge** blends graphs and spatial analysis to solve complex geographic problems using spatial and non-spatial data as an optional capability for ArcGIS Enterprise.

**ArcGIS GeoAnalytics Engine** makes it possible to process and analyze large amounts of

data by leveraging the power of distributed processing with Spark.

For more from the 2022 Esri User Conference, check out [videos from the plenary session online](#).



## HIGICC Hosts Esri UC Pau Hana

***Christine Chaplin, HIGICC***

On July 12, HIGICC hosted a networking event during the 2022 Esri User Conference at Union Kitchen in San Diego. The Pau Hana served as an opportunity to network with GIS users with connections to Hawaii and the Pacific Islands. More than 30 users were in attendance! We had participants from the Counties of Kauai and Maui, State of Hawaii Office of Planning and Sustainable Development, US Army Corps of Engineers, US Army, US Marines, NOAA, Huntington Ingalls Industries, Stantec, NEARMAP, and Esri, as well as GIS users from American Samoa. The Pau Hana was a fun event, and we hope to host it again. See you in San Diego next year!





# [GIS Workshops at 2022 HCPO Conference](#)

**Gretchen Chiques, Esri**

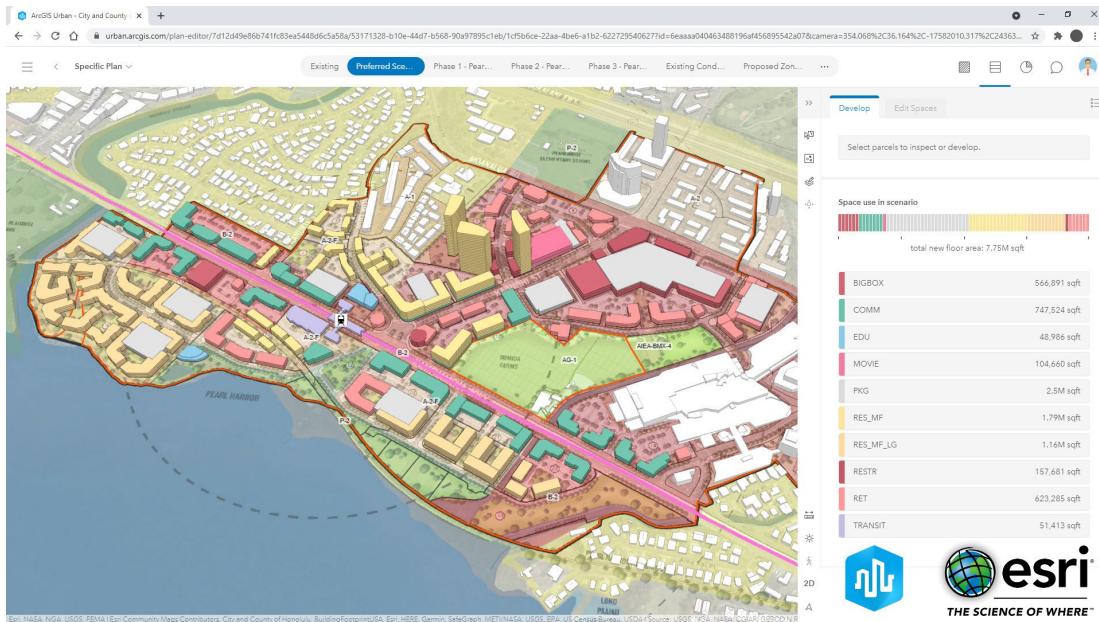
The 2022 Hawai'i Congress of Planning Officials Conference will be hosted at the Grand Hyatt Kaua'i Resort & Spa in Po'ipū on the sunny south shore of Kaua'i from Wednesday, September 14 to Friday, September 16, 2022. There will be two GIS-related workshops on Day 1 of the conference.

## **ArcGIS QuickCapture Training at Kāneiolouma**



Learn to use ArcGIS QuickCapture while experiencing Kāneiolouma. The data gathered will also benefit the ongoing restoration efforts of this sacred wahi pana.

## **Scenario Planning with Web-based GIS Solutions**



Join this hands-on workshop and seminar to learn how communities use ArcGIS Urban to test land use and zoning codes, build out sites with 3D modeling and custom metrics, and

streamline the design review process by analyzing development proposals in context.

For more information and to register, visit: <https://www.hcpo2022.com/>

---

## Mahalo to our Sponsors!

**DUDEK**

*nearmap* 

 **Stantec**